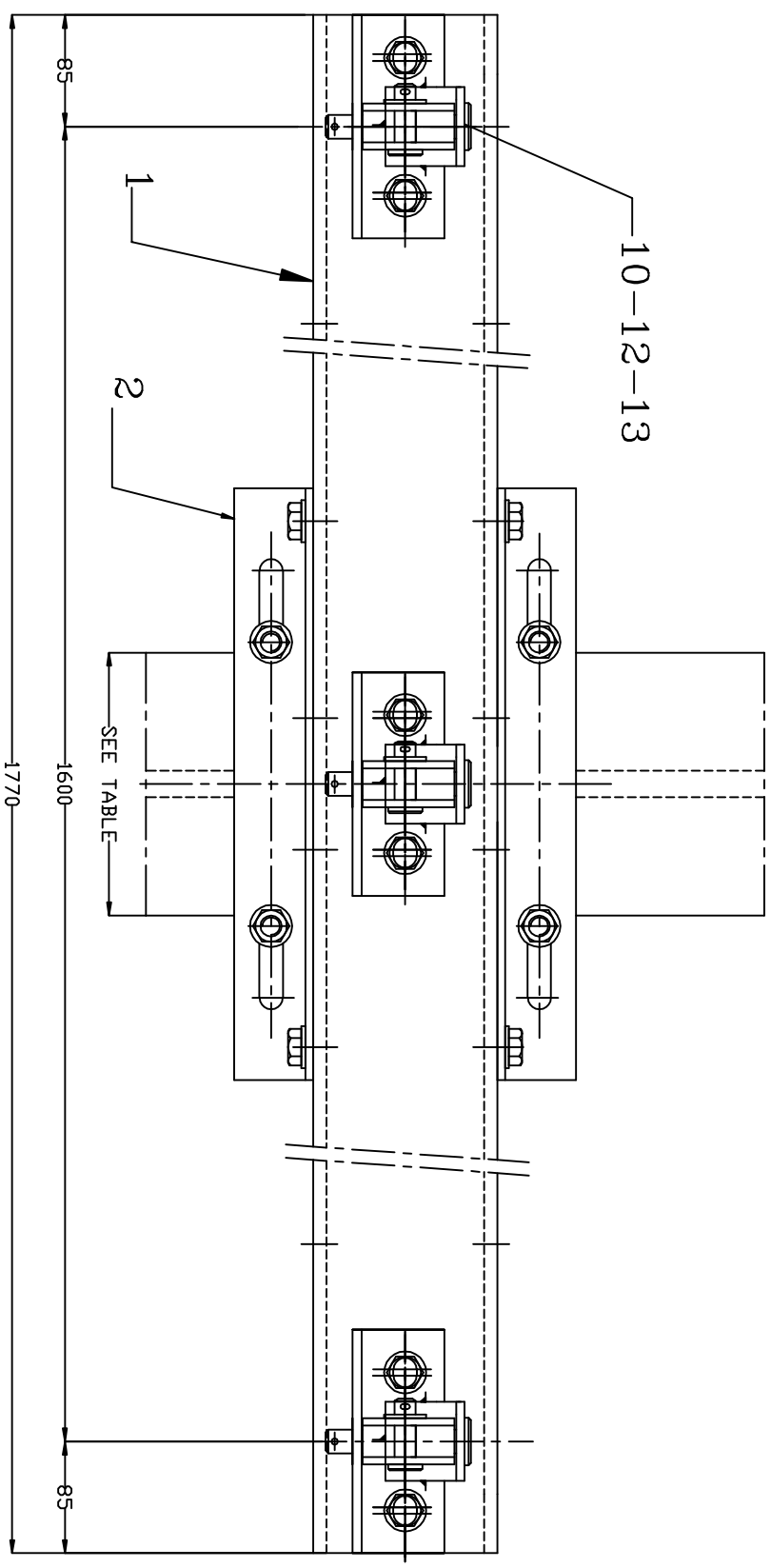


ON H BEAM		ASSEMBLY ALLOCATION	
HE 200 TO 240		2 TOP TUBES	3 TOP TUBES
H 200 TO 320 (A OR B)		SPACING 1.60 m	SPACING 0.80 m
111	112	111	211
		112	212



		QUANTITY				QUANTITY			
10	10	8	8	15	WASHER				
2	2			14	COUNTERPLATE				
3	3	2	2	13	AXIS 20-50	03LCO0BDG090		102	
3	3	2	2	12	WASHER M20	03LCO0BDG146		201050	
3	3	2	2	11	HINGE TOP TUBE	03LCO0BDG142		20A110	
6	6	4	4	10	PIN 4,5*40	ELC 13-9,10 A REV C			
3	3	2	2	9	AXIS 18-110	03LC00BDG145		45A040	
3	3	2	2	8	HINGE SUPPORT	03LC00BDG146		181110	
3	3	2	2	7	THREADED ROD M16-450/100	03LC00BDG114			
4	4			6	COUNTERPLATE	03LC00BDG141		1611E2	
10	10	8	8	5	BOLT HM 16-50/50	03LC00BDG090		101	
18	18	16	16	4	WASHER M16N	03LC00BDG144		1612H1	
				4	THREADED ROD M16-350/100	03LC00BDG142		161110	
				3	COUNTERPLATE FOR SPREADER	03LC00BDG141		1611C2	
				2	SPREADER (1.60m)	03LC00BDG094			
				1	DESIGNATION	03LC00BDG115			
PR21083	212				UNIT MASS				
PR20086	211				REFERENCE DRAWING				
PR21085	112				MARK				
PR21084	111								

Projectat		Material:	
Desenat		Nr. inventar :	21084;21085;20086;21083
Verificat		Inlocuiesle desen nr. :	
Contr.STAS			
Aprobat			



DIRECTIA INDUSTRIE

Data:

TRAFERSA 2-3 CONSOLE STALP H240:320 BALAMA TIRANT

Scara:
SPREADER ASSEMBLY FOR 2 OR 3 TOP TUBES
(spacing 1.60mm)
- BDG079