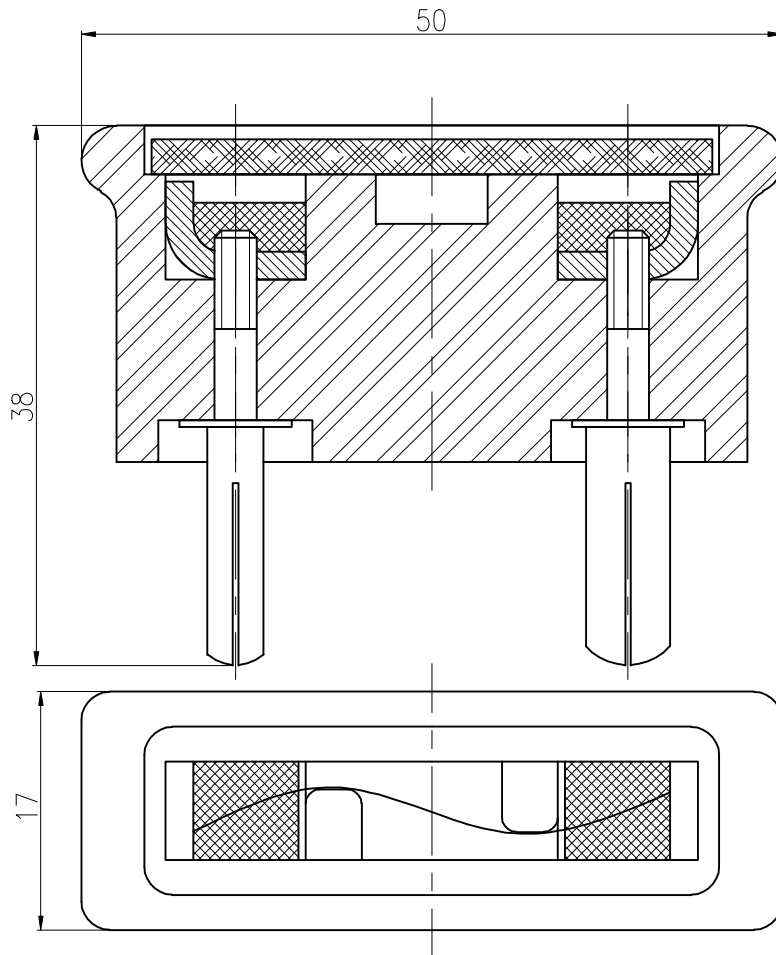



Cod ISAF	Curent nominal (A)	Diametrul bucelor (mm)	
		Bucsa 1	Bucsa 2
8011-A	0,5	$\phi 4 \pm 0,05$	$\phi 4 \pm 0,05$
8011-B	1	$\phi 4 \pm 0,05$	$\phi 5 \pm 0,05$
8011-C	2	$\phi 4 \pm 0,05$	$\phi 6 \pm 0,05$
8011-D	5	$\phi 5 \pm 0,05$	$\phi 5 \pm 0,05$
8011-E	10	$\phi 5 \pm 0,05$	$\phi 6 \pm 0,05$



Proiectat	ing. D. Grivei	Material:	8011-00 A,B,C,D,E	Pag. 1/1
Desenat	ing. D. Grivei			
Verificat	ing. C. Cerschi	Masa neta:	Inlocuieste desen nr. :	Nr. inventar :
Contr.STAS	ing. S. David			
Aprobat	ing. C. Cerschi	Scara: 2:1	SIGURANTA FISA TIP CFR 0.5A,1A,2A,5A,7A,10A,15A	
 DIRECTIA INDUSTRIE		Data: 03.2007		